



**Reeco**  
ESD Clothing

# CONTENTS

## INTRODUCTION

ABOUT REECO	3
CLOTHING MANUFACTURING	4 - 5
ANTISTATIC PROTECTIVE CLOTHING	6
ANTISTATIC FABRICS	7

## ESD CLOTHING

T-SHIRT	8 - 11
LONG SLEEVE T-SHIRT	12 - 15
POLO SHIRT	16 - 19
LONG SLEEVE POLO SHIRT	20 - 23
POLO SHIRT PIQUE	24 - 27
LONG SLEEVE POLO SHIRT PIQUE	28 - 31
CLASSIC SWEATSHIRT	32 - 33
ZIP UP SWEATSHIRT	34 - 35
SOFTSHELL SWEATSHIRT	36 - 37
STANDARD COAT	38 - 41
PREMIUM COAT	42 - 43
TROUSERS	44 - 51

## CLEANROOM CLOTHING

CLEAN ROOM COAT	54 - 55
CLEAN ROOM HOODED COAT	56 - 57
CLEAN ROOM COVERALL	58 - 59

WASHING INSTRUCTIONS	61
COOPERATION	62

MODULAR ANTISTATIC FURNITURE	64
ROBOTS	65
CLEANROOM	66
ELECTRONICS MANUFACTURING AND SERVICE EQUIPMENT	67





# ABOUT REECO

## YEARS OF EXPERIENCE

We have more than 15 years of experience in the production and distribution of the specialist clothing.

During this time we have expanded our range of products and gained experience to provide our clients with comprehensive service in the field of ESD antistatic clothing.

## RANGE OF ACTIVITY

We deliver REECO brand products directly to end users and companies specializing in maintenance and rental of protective clothing.

We also have an extensive network of distribution across Europe and in the United States of America.

## 5 BRANCHES IN EUROPE

All of our branches across Europe are equipped with DEMO ROOM, where we can present and test our products, proving its effectiveness and great quality.

What distinguishes us - personal commitment to client's needs.

## 1600 m<sup>2</sup> OF WAREHOUSE AREA

Logistics and warehouse staff, through close cooperation with other company departments, always have current knowledge about the status of each order. Our employees enable us to deliver order promptly and directly to you.

## FAIRS AND CONFERENCES

We are advertising and promoting REECO clothing during various domestic and foreign conferences and fairs. You can meet us at Automaticon, Motek, Productronica and Industry Week.







# CLOTHING MANUFACTURING

---

We know how important is the user comfort and safety when working with components and devices sensitive to electrostatic discharge, therefore we constantly take care of maintaining high standards during the clothing manufacturing. REECO ESD Antistatic clothing is produce in Poland under appropriate work conditions.

We constantly control the properties of our fabrics and accessories used for the production. The result is constant end product quality, verified at the stage of preparation, sewing and packing.

Reeco clothing can be washed and dried industrially. We have several years of experience in cooperation with leading industrial laundries.

## STANDARDS

Clothing presented in our catalogue meets the requirements of following standards:

**PN-EN 1149-5 | PN-EN ISO 13688 | PN-EN 61340-5-1**

REECO ESD Antistatic clothing also meets the material requirements for protective clothing with electrostatic dissipating properties for EX areas. Ready product, after EHS Specialist prior approval can be used in the presence of flammable media, including methane and coal dust.

## PERSONALIZED CLOTHING

We offer complete personalization of REECO ESD Antistatic clothing with possibility of embroidery of Customer's logo and name. We also provide thermal labels allowing for easy identification of clothing by employees.

# ANTISTATIC PROTECTIVE CLOTHING

According to international research about 70% of damages of electronic components are caused by inappropriate personnel protection.

Human is primary charges generator.

Therefore, the main method of protection against electrostatic discharges becomes antistatic clothing. Very widespread mistake is belief about efficient ESD protection by using wrist strap.

While all international standards, including EN 61340-5-1, stresses necessity of using special clothing directly at workplace and in all EPA zones.



USE OF ANTISTATIC CLOTHING  
IS ONE OF THE MOST EFFECTIVE  
METHODS OF PROTECTION AGAINST  
ELECTROSTATIC DISCHARGE



# ANTISTATIC FABRICS

All of the fabrics that we use have been tested for their applicable antistatic standards by Textile Research Institute. We provide several types of fabrics different due to the structure, composition and color. All of the fabrics are characterized by high durability and color stability.

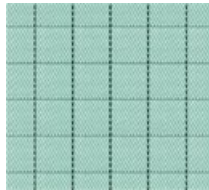
FABRIC 065



**COMPOSITION:**

Cotton 34 %  
Polyester 64 %  
Carbon fiber 2 %

FABRIC 099



**COMPOSITION:**

Polyester 99 %  
Carbon fiber 1 %

PIQUE KNIT FABRIC



**COMPOSITION:**

Cotton 98 %  
Carbon fiber 2 %

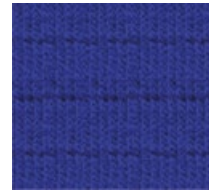
KNIT FABRIC 050



**COMPOSITION:**

Cotton 49 %  
Polyester 49 %  
Carbon fiber 2 %

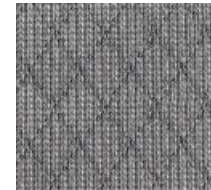
KNIT FABRIC 260



**COMPOSITION:**

Cotton 49 %  
Polyester 49 %  
Carbon fiber 2 %

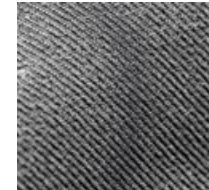
KNIT FABRIC 95



**COMPOSITION:**

Polyester 95 %  
Carbon fiber 5 %

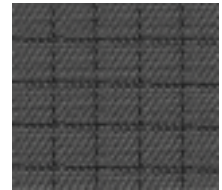
FABRIC SOFTSHELL



**COMPOSITION:**

Polyester 96 %  
Carbon fiber 4 %

FABRIC 245



**COMPOSITION:**

Cotton 32 %  
Polyester 66 %  
Carbon fiber 2 %

**WEIGHT:**  
150 g/m<sup>2</sup>

**WEIGHT:**  
110 g/m<sup>2</sup>

**WEIGHT:**  
160 g/m<sup>2</sup>

**WEIGHT:**  
180 g/m<sup>2</sup>

**WEIGHT:**  
260 g/m<sup>2</sup>

**WEIGHT:**  
100 g/m<sup>2</sup>

**WEIGHT:**  
300 g/m<sup>2</sup>

**WEIGHT:**  
245 g/m<sup>2</sup>

## COLOR MATCHING

We did our best to present printed colors as similar as possible to the actual colors, however we would like to inform that printed and electronic colors do not give a fully accurate representation of the actual colors of the clothing.



**49%**  
COTTON

**49%**  
POLYESTER

**2%**  
CARBON FIBER

Product code:  
**CE-TSHIR.050.D**



RESISTANCE IN ACCORDANCE  
WITH STANDARD

**PN-EN 61340-5-1**



WEIGHT

**180 g/m<sup>2</sup>**





# WOMEN'S T-SHIRT

## DESCRIPTION

Fabric	KNIT FABRIC 050
Cut	FEMALE
Sizes	2XS - 2XL
ESD sign	SIDE TAG

## OPTIONS

Custom size	BESPOKE
Custom color	BESPOKE
Customer's logo	EMBROIDERY

## AVAILABLE COLOURS | KNIT FABRIC 050

### STANDARD

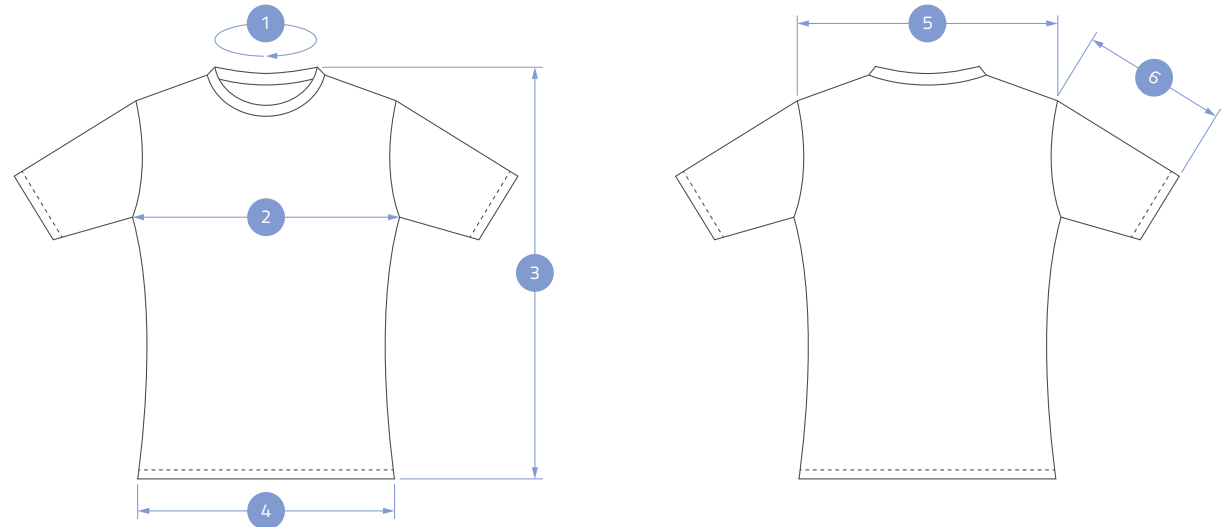


Navy blue	Black	White	Blue	Red	Light grey melange
25	27	28	30	39	71

### NON-STANDARD



Orange	Dark grey	Lemon green	Dark green	Neon yellow
38	40	42	54	55



	2XS	XS	S	M	L	XL	2XL
BODY							
1	36	37	37	39	39	41	41
2	45	47	49	51	54	57	60
3	69	70	71	72	73	74	74
4	49	51	53	55	58	61	64
5	34	35	36	37	38	40	40
SLEEVES							
6	20	21	21	22	23	23	23

Dimensions in centimeters (cm) | Dimensional tolerance +/- 1.5 cm

49%

COTTON

49%

POLYESTER

2%

CARBON FIBER



RESISTANCE IN ACCORDANCE  
WITH STANDARD

**PN-EN 61340-5-1**



WEIGHT

**180 g/m<sup>2</sup>**

Product code:  
**CE-TSHIRT.050**



# MEN'S T-SHIRT

## DESCRIPTION

Fabric	KNIT FABRIC 050
Cut	MALE
Sizes	2XS - 2XL
ESD sign	SIDE TAG

## OPTIONS

Custom size	BESPOKE
Custom color	BESPOKE
Customer's logo	EMBROIDERY

## AVAILABLE COLOURS | KNIT FABRIC 050

### STANDARD

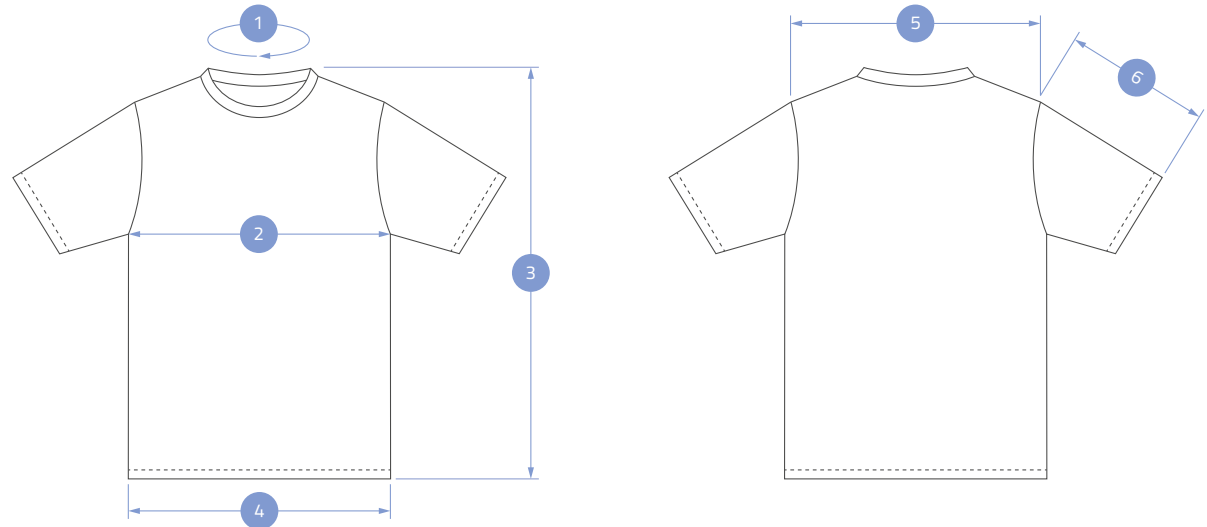


Navy blue	Black	White	Blue	Red	Light grey melange
25	27	28	30	39	71

### NON-STANDARD



Orange	Dark grey	Lemon green	Dark green	Neon yellow
38	40	42	54	55



	2XS	XS	S	M	L	XL	2XL
BODY							
1	40	41	41	43	45	48	49
2	46	49	52	55	58	61	64
3	66	67	68	68	70	70	72
4	46	49	52	55	58	61	64
5	47	48	49	50	51	52	53
SLEEVES							
6	22	22	22	23	23	24	25

Dimensions in centimeters (cm) | Dimensional tolerance +/- 1.5 cm

49%

COTTON

49%

POLYESTER

2%

CARBON FIBER



RESISTANCE IN ACCORDANCE  
WITH STANDARD

**PN-EN 61340-5-1**



WEIGHT

**180 g/m<sup>2</sup>**

Product code:

**CE-TSHIR.050.D.LS**





# WOMEN'S LONG SLEEVE T-SHIRT

## DESCRIPTION

Fabric	KNIT FABRIC 050
Cut	FEMALE
Sizes	2XS - 2XL
Sleeves	RIB CUFF
ESD sign	SIDE TAG

## OPTIONS

Custom size	BESPOKE
Custom color	BESPOKE
Customer's logo	EMBROIDERY

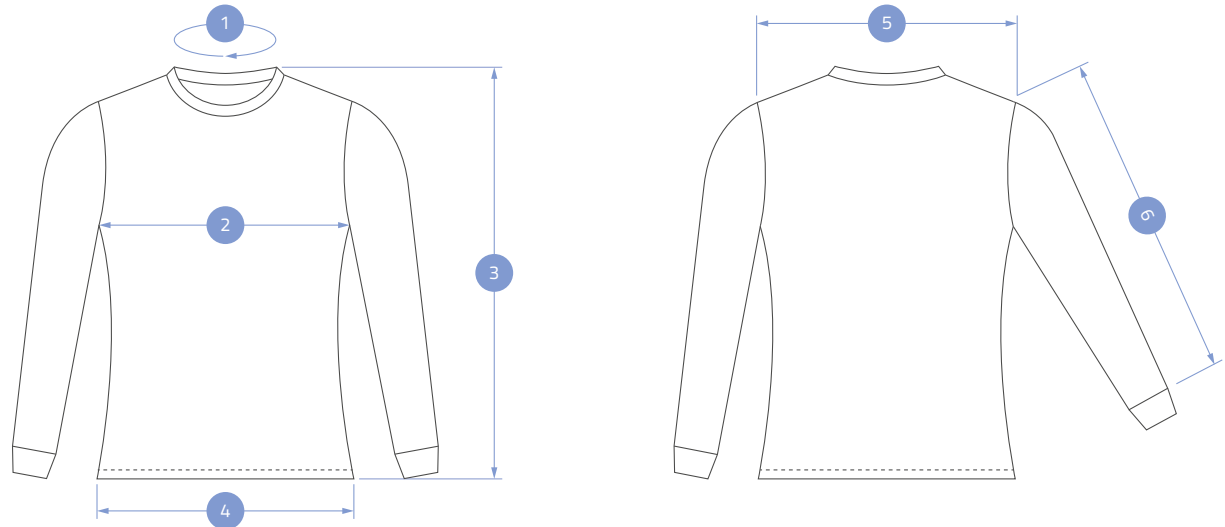
## AVAILABLE COLOURS | KNIT FABRIC 050

### STANDARD

Navy blue	Black	White	Blue	Red	Light grey melange
25	27	28	30	39	71

### NON-STANDARD

Orange	Dark grey	Lemon green	Dark green	Neon yellow
38	40	42	54	55



	2XS	XS	S	M	L	XL	2XL
BODY							
1	36	37	37	39	39	41	41
2	45	47	49	51	54	57	60
3	69	70	71	72	73	74	74
4	49	51	53	55	58	61	64
5	34	35	36	37	38	40	40
SLEEVES							
6	59	60	61	62	63	64	65

Dimensions in centimeters (cm) | Dimensional tolerance +/- 1.5 cm

49%

COTTON

49%

POLYESTER

2%

CARBON FIBER

Product code:  
CE-TSHIR.050.LS



RESISTANCE IN ACCORDANCE  
WITH STANDARD

**PN-EN 61340-5-1**



WEIGHT

**180 g/m<sup>2</sup>**



# MEN'S LONG SLEEVE T-SHIRT

## DESCRIPTION

Fabric	KNIT FABRIC 050
Cut	MALE
Sizes	2XS - 2XL
Sleeves	RIB CUFF
ESD sign	SIDE TAG

## OPTIONS

Custom size	BESPOKE
Custom color	BESPOKE
Customer's logo	EMBROIDERY

## AVAILABLE COLOURS | KNIT FABRIC 050

### STANDARD

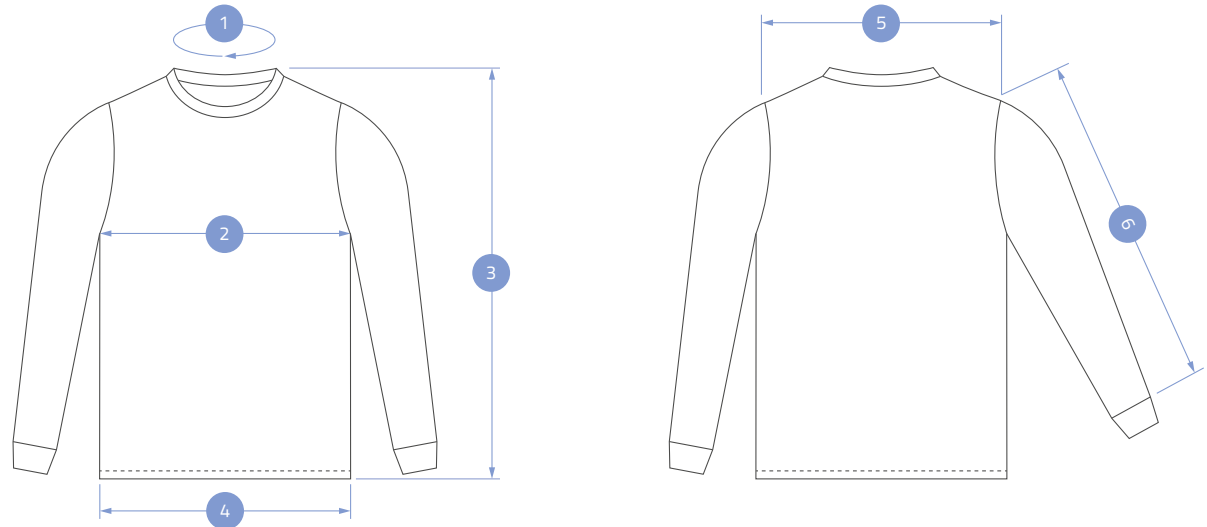


Navy blue	Black	White	Blue	Red	Light grey melange
25	27	28	30	39	71

### NON-STANDARD



Orange	Dark grey	Lemon green	Dark green	Neon yellow
38	40	42	54	55



	2XS	XS	S	M	L	XL	2XL
BODY							
1	40	41	41	43	45	48	49
2	46	49	52	55	58	61	64
3	66	67	68	68	70	70	72
4	46	49	52	55	58	61	64
5	47	48	49	50	51	52	53
SLEEVES							
6	66	66	68	68	70	70	74

Dimensions in centimeters (cm) | Dimensional tolerance +/- 1.5 cm

49%  
COTTON

49%  
POLYESTER

2%  
CARBON FIBER

Product code:  
CE-POLO.050.D



RESISTANCE IN ACCORDANCE  
WITH STANDARD

PN-EN 61340-5-1



WEIGHT

180 g/m<sup>2</sup>





# WOMEN'S POLO SHIRT

## DESCRIPTION

Fabric	KNIT FABRIC 050
Cut	FEMALE
Sizes	2XS - 2XL
Fastener	THREE BUTTONS
Pockets	ONE ON THE LEFT BREAST
ESD sign	SIDE TAG

## OPTIONS

Custom size	BESPOKE
Custom color	BESPOKE
Customer's logo	EMBROIDERY

## AVAILABLE COLOURS | KNIT FABRIC 050

### STANDARD

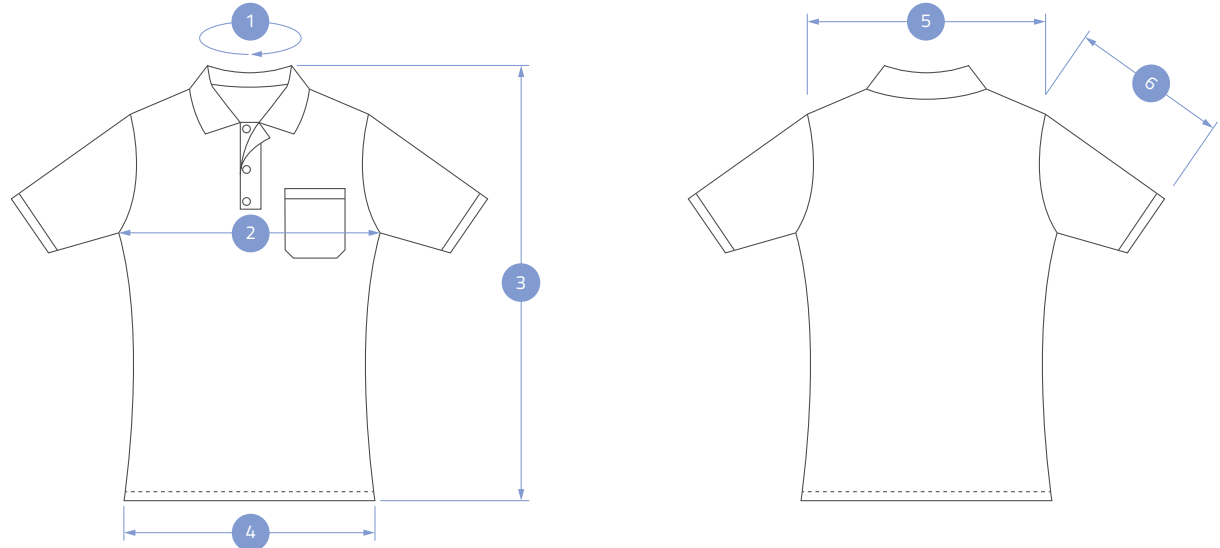


Navy blue	Black	White	Blue	Red	Light grey melange
25	27	28	30	39	71

### NON-STANDARD



Orange	Dark grey	Lemon green	Dark green	Neon yellow
38	40	42	54	55



	2XS	XS	S	M	L	XL	2XL
BODY							
1	38	38	38	40	40	42	42
2	45	47	49	51	54	57	60
3	69	70	71	72	73	74	74
4	49	51	53	55	58	61	64
5	34	35	36	37	38	40	40
SLEEVES							
6	22	23	23	24	24	25	25

Dimensions in centimeters (cm) | Dimensional tolerance +/- 1.5 cm

**49%**  
COTTON

**49%**  
POLYESTER

**2%**  
CARBON FIBER

Product code:  
**CE-POLO.050**



RESISTANCE IN ACCORDANCE  
WITH STANDARD

**PN-EN 61340-5-1**



WEIGHT

**180 g/m<sup>2</sup>**



# MEN'S POLO SHIRT

## DESCRIPTION

Fabric	KNIT FABRIC 050
Cut	MALE
Sizes	2XS - 2XL
Fastener	THREE BUTTONS
Pockets	ONE ON THE LEFT BREAST
ESD sign	SIDE TAG

## OPTIONS

Custom size	BESPOKE
Custom color	BESPOKE
Customer's logo	EMBROIDERY

## AVAILABLE COLOURS | KNIT FABRIC 050

### STANDARD

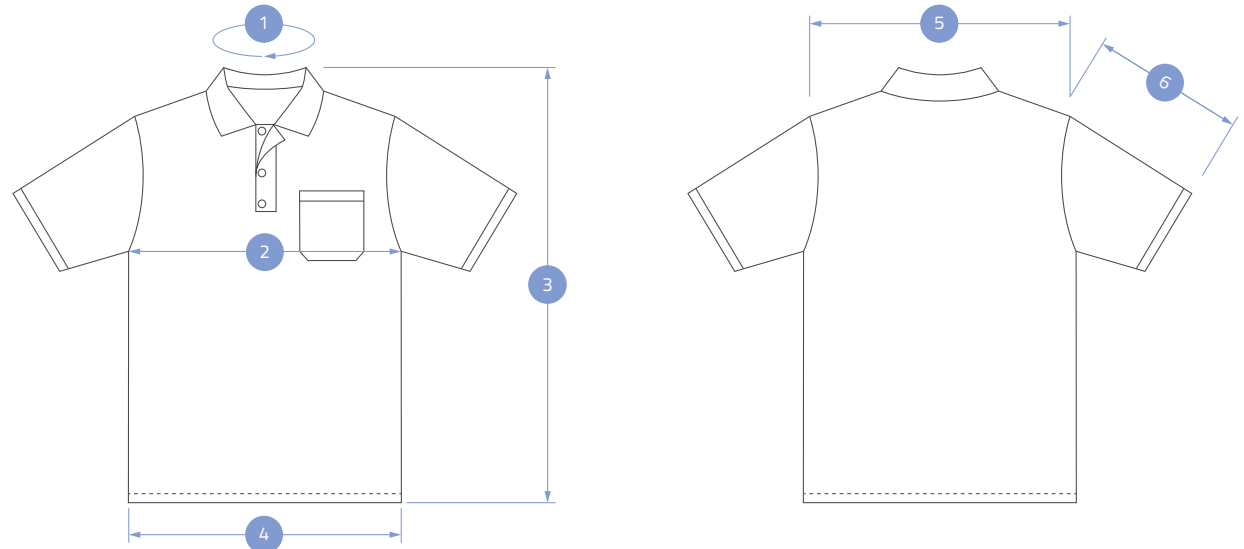


Navy blue	Black	White	Blue	Red	Light grey melange
25	27	28	30	39	71

### NON-STANDARD



Orange	Dark grey	Lemon green	Dark green	Neon yellow
38	40	42	54	55



	2XS	XS	S	M	L	XL	2XL
BODY							
1	38	38	38	40	40	42	42
2	47	50	54	58	62	66	70
3	68	68	70	71	73	74	74
4	47	50	54	58	62	66	70
5	45	46	48	50	52	54	55
SLEEVES							
6	24	24	24	26	26	27	27

Dimensions in centimeters (cm) | Dimensional tolerance +/- 1.5 cm

49%

COTTON

49%

POLYESTER

2%

CARBON FIBER



RESISTANCE IN ACCORDANCE  
WITH STANDARD

**PN-EN 61340-5-1**



WEIGHT

**180 g/m<sup>2</sup>**

Product code:  
**CE-POLO.050.D.LS**





# WOMEN'S LONG SLEEVE POLO SHIRT

## DESCRIPTION

Fabric	KNIT FABRIC 050
Cut	FEMALE
Sizes	2XS - 2XL
Fastener	THREE BUTTONS
Pockets	ONE ON THE LEFT BREAST
Sleeves	RIB CUFF
ESD sign	SIDE TAG

## OPTIONS

Custom size	BESPOKE
Custom color	BESPOKE
Customer's logo	EMBROIDERY

## AVAILABLE COLOURS | KNIT FABRIC 050

### STANDARD

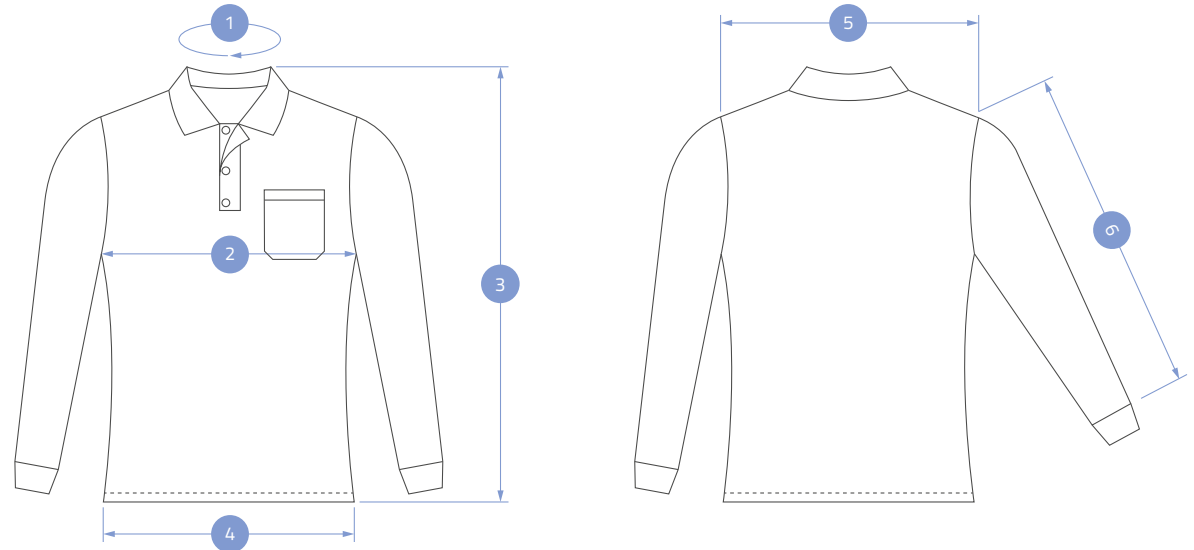


Navy blue	Black	White	Blue	Red	Light grey melange
25	27	28	30	39	71

### NON-STANDARD



Orange	Dark grey	Lemon green	Dark green	Neon yellow
38	40	42	54	55



	2XS	XS	S	M	L	XL	2XL
BODY							
1	38	38	38	40	40	42	42
2	45	47	49	51	54	57	60
3	59	70	71	72	73	74	74
4	49	51	53	55	58	61	64
5	34	35	36	37	38	40	40
SLEEVES							
6	59	60	61	62	63	64	65

Dimensions in centimeters (cm) | Dimensional tolerance +/- 1.5 cm

49%

COTTON

49%

POLYESTER

2%

CARBON FIBER

Product code:  
CE-POLO.050.LS



RESISTANCE IN ACCORDANCE  
WITH STANDARD

**PN-EN 61340-5-1**



WEIGHT

**180 g/m<sup>2</sup>**



# MEN'S LONG SLEEVE POLO SHIRT

## DESCRIPTION

Fabric	KNIT FABRIC 050
Cut	MALE
Sizes	2XS - 2XL
Fastener	THREE BUTTONS
Pockets	ONE ON THE LEFT BREAST
Sleeves	RIB CUFF
ESD sign	SIDE TAG

## OPTIONS

Custom size	BESPOKE
Custom color	BESPOKE
Customer's logo	EMBROIDERY

## AVAILABLE COLOURS | KNIT FABRIC 050 STANDARD

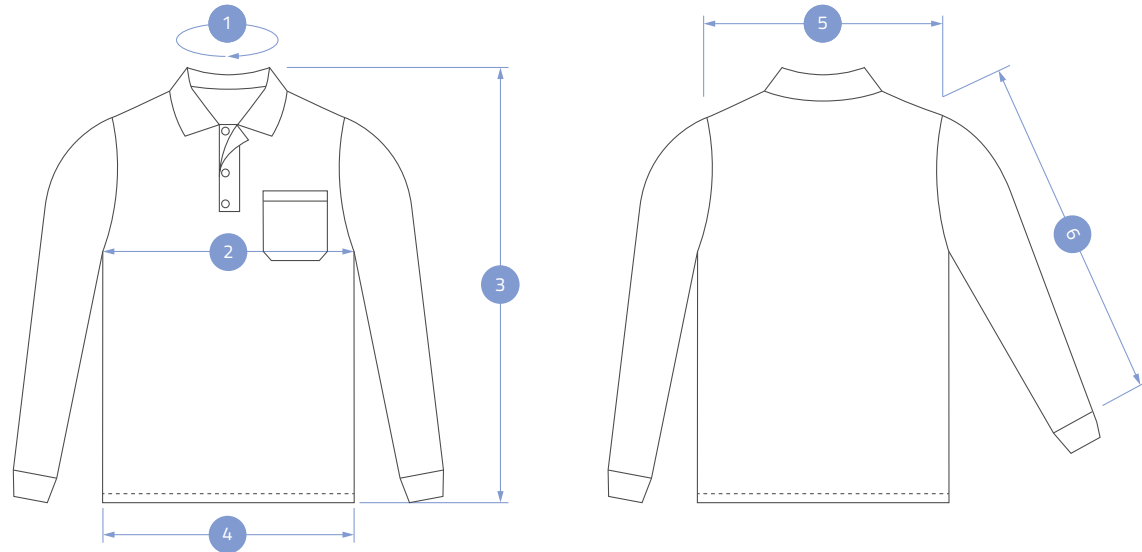


Navy blue	Black	White	Blue	Red	Light grey melange
25	27	28	30	39	71

## NON-STANDARD



Orange	Dark grey	Lemon green	Dark green	Neon yellow
38	40	42	54	55



	2XS	XS	S	M	L	XL	2XL
BODY							
1	38	38	38	40	40	42	42
2	47	50	54	58	62	66	70
3	68	68	70	71	73	74	74
4	47	50	54	58	62	66	70
5	45	46	48	50	52	54	55
SLEEVES							
6	58	58	60	60	62	62	64

Dimensions in centimeters (cm) | Dimensional tolerance +/- 1.5 cm

98%

COTTON

2%

CARBON FIBER



RESISTANCE IN ACCORDANCE  
WITH STANDARD

**PN-EN 61340-5-1**



WEIGHT

**160 g/m<sup>2</sup>**

Product code:  
**CE-POLO.PIKA.D**





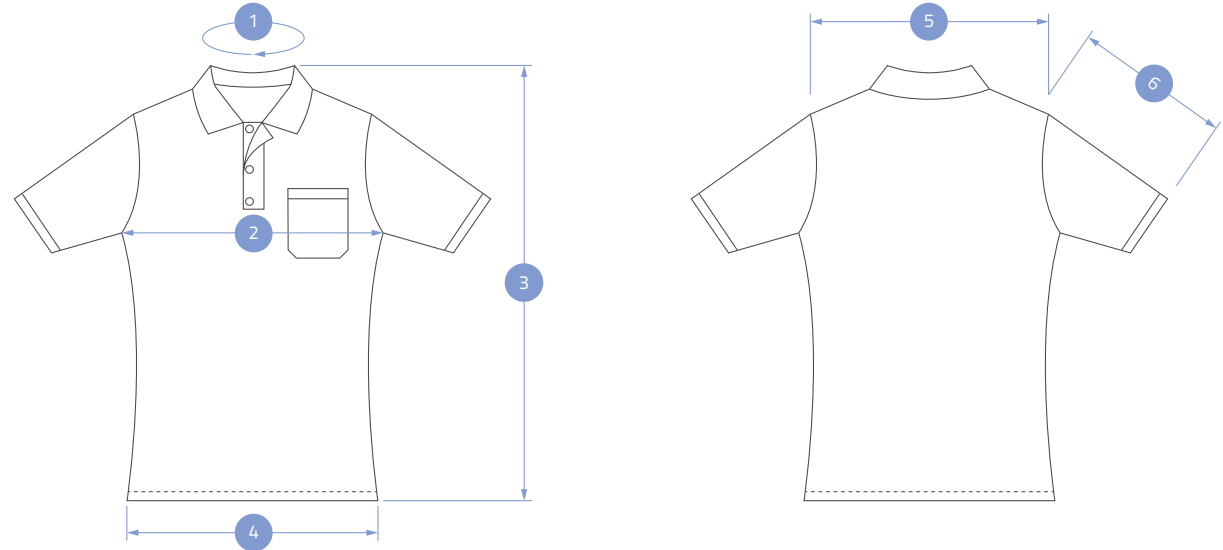
# WOMEN'S POLO SHIRT PIQUE

## DESCRIPTION

Fabric	PIQUE KNIT FABRIC
Cut	FEMALE
Sizes	2XS - 2XL
Fastener	THREE BUTTONS
Pockets	ONE ON THE LEFT BREAST
ESD sign	SIDE TAG

## OPTIONS

Custom size	BESPOKE
Custom color	BESPOKE
Customer's logo	EMBROIDERY



## AVAILABLE COLORS | PIQUE KNIT FABRIC



Blue	Navy blue	Black
19	20	23

	2XS	XS	S	M	L	XL	2XL
BODY							
1	38	38	38	40	40	42	42
2	45	47	49	51	54	57	60
3	69	70	71	72	73	74	74
4	49	51	53	55	58	61	64
5	34	35	36	37	38	40	40
SLEEVES							
6	22	23	23	24	24	25	25

Dimensions in centimeters (cm) | Dimensional tolerance +/- 1.5 cm

98%

COTTON

2%

CARBON FIBER



RESISTANCE IN ACCORDANCE  
WITH STANDARD

**PN-EN 61340-5-1**



WEIGHT

**160 g/m<sup>2</sup>**

Product code:  
**CE-POLO.PIKA**



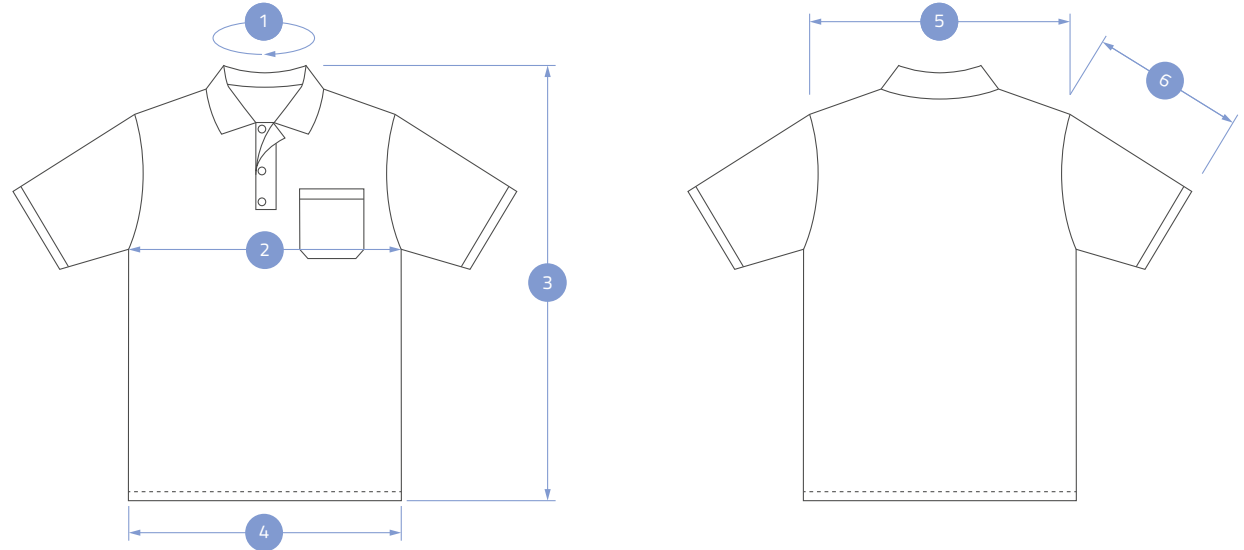
# MEN'S POLO SHIRT PIQUE

## DESCRIPTION

Fabric	PIQUE KNIT FABRIC
Cut	MALE
Sizes	2XS - 2XL
Fastener	THREE BUTTONS
Pockets	ONE ON THE LEFT BREAST
ESD sign	SIDE TAG

## OPTIONS

Custom size	BESPOKE
Custom color	BESPOKE
Customer's logo	EMBROIDERY



## AVAILABLE COLORS | PIQUE KNIT FABRIC



Blue	Navy blue	Black
19	20	23

	2XS	XS	S	M	L	XL	2XL
BODY							
1	38	38	38	40	40	42	42
2	47	50	54	58	62	66	70
3	68	68	70	71	73	74	74
4	47	50	54	58	62	66	70
5	45	46	48	50	52	54	55
SLEEVES							
6	24	24	24	26	26	27	27

Dimensions in centimeters (cm) | Dimensional tolerance +/- 1.5 cm

98%

COTTON

2%

CARBON FIBER



RESISTANCE IN ACCORDANCE  
WITH STANDARD

**PN-EN 61340-5-1**



WEIGHT

**160 g/m<sup>2</sup>**

Product code:

**CE-POLO.PIKA.D.LS**



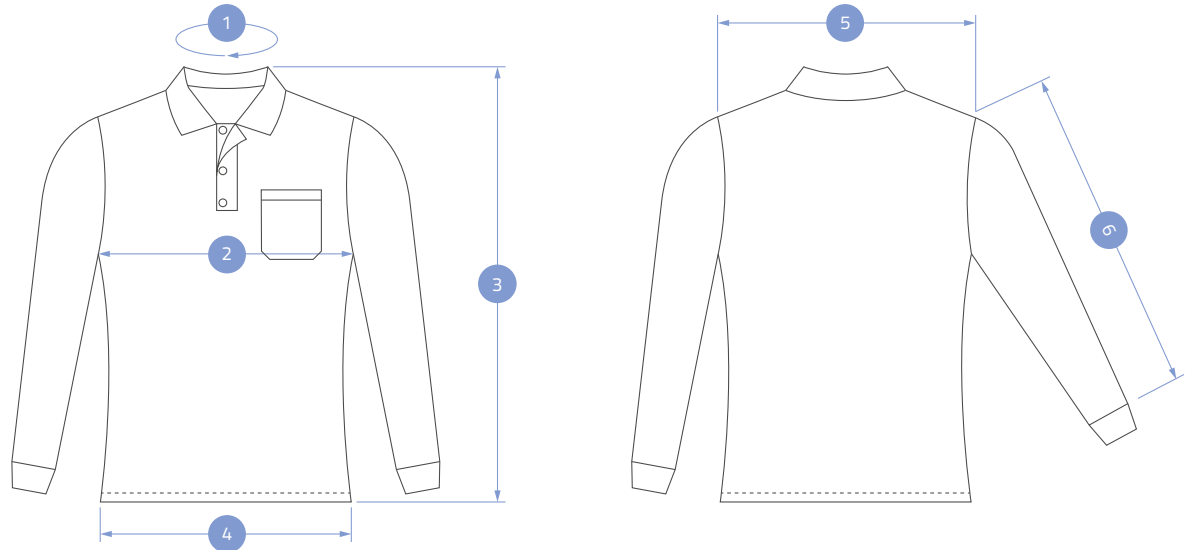
# WOMEN'S LONG SLEEVE POLO SHIRT PIQUE

## DESCRIPTION

Fabric	PIQUE KNIT FABRIC
Cut	FEMALE
Sizes	2XS - 2XL
Fastener	THREE BUTTONS
Pockets	ONE ON THE LEFT BREAST
Sleeves	RIB CUFF
ESD sign	SIDE TAG

## OPTIONS

Custom size	BESPOKE
Custom color	BESPOKE
Customer's logo	EMBROIDERY



## AVAILABLE COLORS | PIQUE KNIT FABRIC



Blue	Navy blue	Black
19	20	23

	2XS	XS	S	M	L	XL	2XL
BODY							
1	38	38	38	40	40	42	42
2	45	47	49	51	54	57	60
3	69	70	71	72	73	74	74
4	49	51	53	55	58	61	64
5	34	35	36	37	38	40	40
SLEEVES							
6	59	60	61	62	63	64	65

Dimensions in centimeters (cm) | Dimensional tolerance +/- 1.5 cm



98%

COTTON

2%

CARBON FIBER



RESISTANCE IN ACCORDANCE  
WITH STANDARD

**PN-EN 61340-5-1**



WEIGHT

**160 g/m<sup>2</sup>**

Product code:  
**CE-POLO.PIKA.LS**



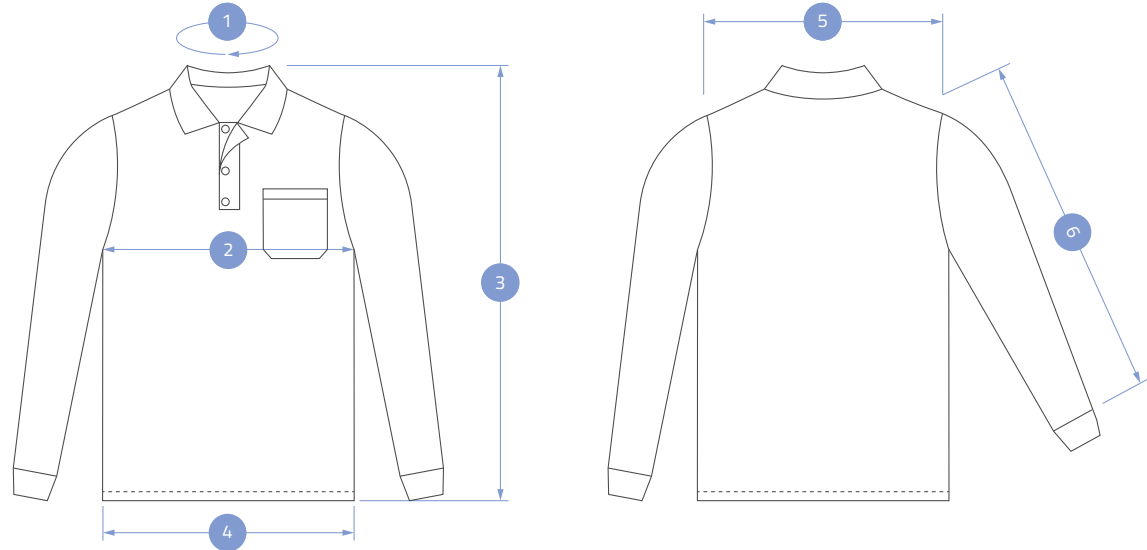
# MEN'S LONG SLEEVE POLO SHIRT PIQUE

## DESCRIPTION

Fabric	PIQUE KNIT FABRIC
Cut	MALE
Sizes	2XS - 2XL
Fastener	THREE BUTTONS
Pockets	ONE ON THE LEFT BREAST
Sleeves	RIB CUFF
ESD sign	SIDE TAG

## OPTIONS

Custom size	BESPOKE
Custom color	BESPOKE
Customer's logo	EMBROIDERY



## AVAILABLE COLORS | PIQUE KNIT FABRIC



Blue	Navy blue	Black
19	20	23

	2XS	XS	M	L	XL	2XL	
BODY							
1	38	38	38	40	40	42	42
2	47	50	54	58	62	66	70
3	68	68	70	71	73	74	74
4	47	50	54	58	62	66	70
5	45	46	48	50	52	54	55
SLEEVES							
6	58	58	60	60	62	62	64

Dimensions in centimeters (cm) | Dimensional tolerance +/- 1.5 cm

49%

COTTON

49%

POLYESTER

2%

CARBON FIBER



RESISTANCE IN ACCORDANCE  
WITH STANDARD

**PN-EN 61340-5-1**



WEIGHT

**260 g/m<sup>2</sup>**

Product code:  
**CE-BLUZA.260.BS**



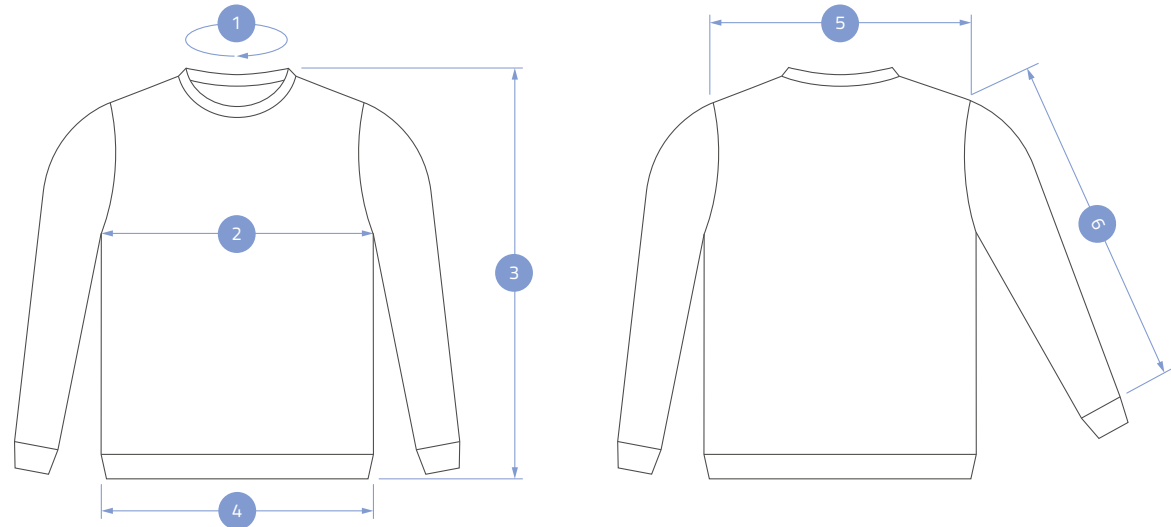
# CLASSIC SWEATSHIRT

## DESCRIPTION

Fabric	KNIT FABRIC 260
Cut	UNISEX
Sizes	2XS - 2XL
Neck	RIB CUFF
Sleeves	RIB CUFF
Bottom	RIB WELT
ESD sign	SIDE TAG

## OPTIONS

Custom size	BESPOKE
Custom color	BESPOKE
Customer's logo	EMBROIDERY



## AVAILABLE COLORS | KNIT FABRIC 260



Light grey melange	Black	Navy blue	Blue	Dark green
68	26	34	35	75

	2XS	XS	S	M	L	XL	2XL
BODY							
1	40	42	44	46	47	48	49
2	46	50	54	58	62	66	70
3	56	56	59	63	66	69	72
4	44	48	52	56	60	64	68
5	47	49	50	52	53	55	56
SLEEVES							
6	56	57	58	61	63	67	70

Dimensions in centimeters (cm) | Dimensional tolerance +/- 1.5 cm

49%

COTTON

49%

POLYESTER

2%

CARBON FIBER



RESISTANCE IN ACCORDANCE  
WITH STANDARD

**PN-EN 61340-5-1**



WEIGHT

**260 g/m<sup>2</sup>**

Product code:  
**CE-BLUZA.260.UP**



# ZIP UP SWEATSHIRT

## DESCRIPTION

Fabric	KNIT FABRIC 260
Cut	UNISEX
Sizes	2XS - 2XL
Fastener	COVERED ZIPPER
Neck	TURTLE NECK
Sleeves	RIB CUFF
Bottom	RIB WELT
ESD sign	SIDE TAG

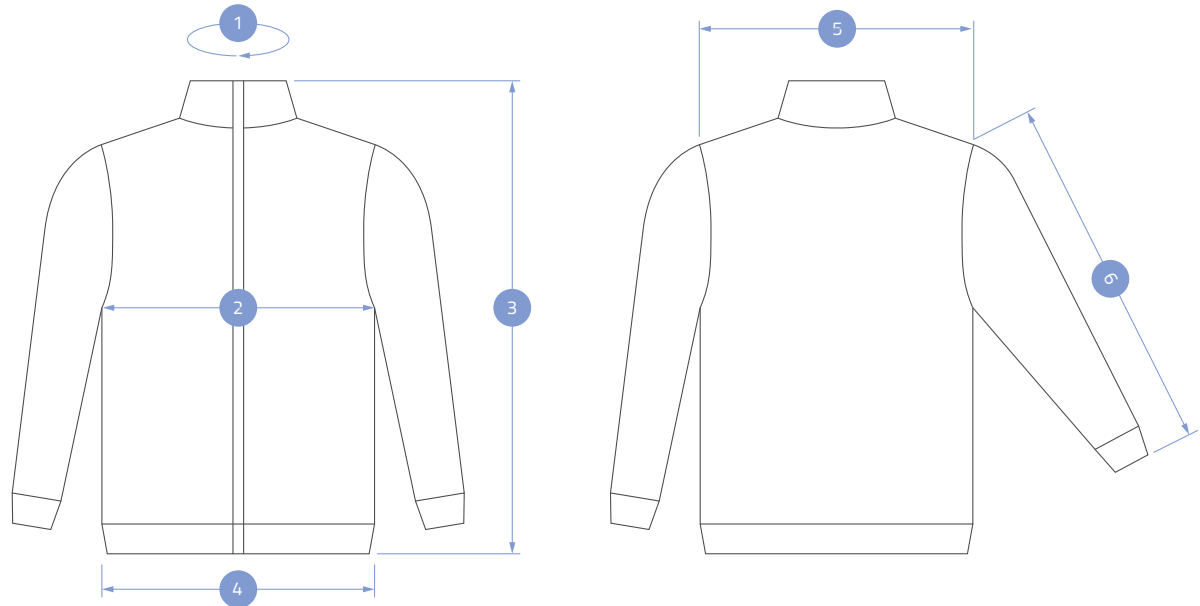
## OPTIONS

Custom size	BESPOKE
Custom color	BESPOKE
Customer's logo	EMBROIDERY

## AVAILABLE COLORS | KNIT FABRIC 260



Light grey melange	Black	Navy blue	Blue	Dark green
68	26	34	35	75



	2XS	XS	S	M	L	XL	2XL
BODY							
1	36	40	40	42	43	45	47
2	52	55	58	61	64	67	70
3	74	76	78	80	82	84	86
4	42	45	48	51	54	57	60
5	45	46	47	48	49	50	51
SLEEVES							
6	66	68	70	74	76	78	80

Dimensions in centimeters (cm) | Dimensional tolerance +/- 1.5 cm



96%

POLYESTER

4%

CARBON FIBER



RESISTANCE IN ACCORDANCE  
WITH STANDARD

**PN-EN 61340-5-1**



WEIGHT

**300 g/m<sup>2</sup>**

Product code:

**CE-SOFTSHELL.SFTL**



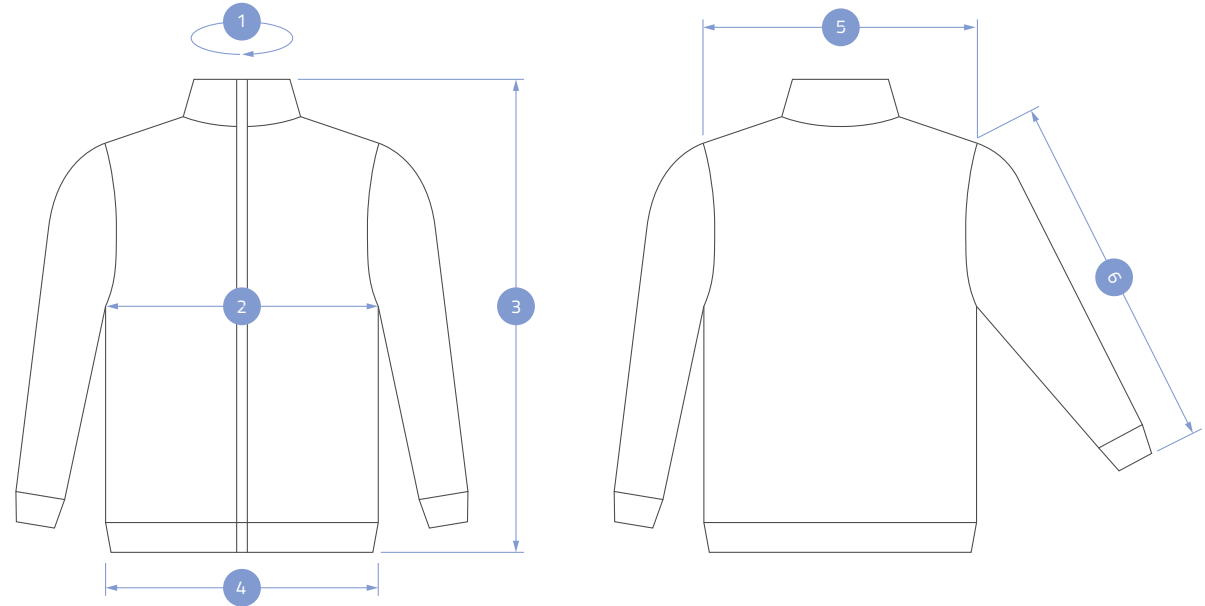
# SOFTSHELL SWEATSHIRT

## DESCRIPTION

Fabric	FABRIC SFTL
Cut	UNISEX
Sizes	2XS - 2XL
Fastener	COVERED METAL SNAPS
Neck	TURTLE NECK
Sleeves	RIB CUFF
Bottom	RIB WELT
ESD sign	SIDE TAG

## OPTIONS

Custom size	BESPOKE
Custom color	BESPOKE
Customer's logo	EMBROIDERY



## AVAILABLE COLORS | FABRIC SFTL



Black

37

	2XS	XS	S	M	L	XL	2XL
BODY							
1	36	40	40	42	43	45	47
2	52	55	56	58	60	62	64
3	70	71	71	72	72	73	73
4	48	49	51	53	55	57	59
5	53	54	56	56	58	60	62

Dimensions in centimeters (cm) | Dimensional tolerance +/- 1.5 cm

34%

COTTON

64%

POLYESTER

2%

CARBON FIBER



RESISTANCE IN ACCORDANCE  
WITH STANDARD

**PN-EN 61340-5-1**



WEIGHT

**160 g/m<sup>2</sup>**

Product code:  
**CE-FARTU.065.D**



# WOMEN'S STANDARD COAT

## DESCRIPTION

Fabric	FABRIC 065
Cut	FEMALE
Sizes	2XS - 2XL
Fastener	COVERED METAL SNAPS
Pockets	TWO ON THE BOTTOM ONE ON THE LEFT BREAST ONE ON THE LEFT SLEEVE
ESD sign	ON THE BREAST POCKET

## OPTIONS

Custom size	BESPOKE
Custom color	BESPOKE
Customer's logo	EMBROIDERY

## AVAILABLE COLOURS | FABRIC 065

### STANDARD

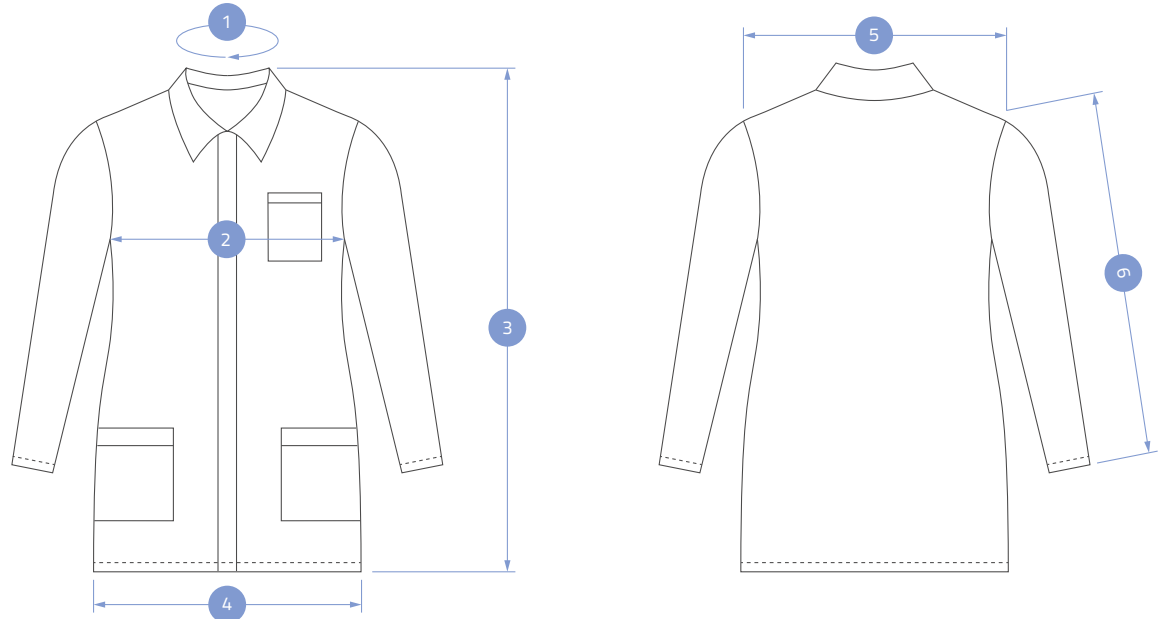


White	Blue	Navy blue	Green	Black
01	02	03	04	22

### NON-STANDARD



Yellow	Light grey	Dark grey	Red
06	14	29	60



	2XS	XS	S	M	L	XL	2XL
BODY							
1	35	36	38	39	40	40	42
2	44	46	49	51	54	57	61
3	79	82	85	88	90	92	92
4	48	50	52	54	58	62	66
5	39	40	41	42	43	43	44
SLEEVES							
6	53	54	56	56	58	60	62

Dimensions in centimeters (cm) | Dimensional tolerance +/- 1.5 cm

34%

COTTON

64%

POLYESTER

2%

CARBON FIBER

Product code:  
CE-FARTU.065



RESISTANCE IN ACCORDANCE  
WITH STANDARD

**PN-EN 61340-5-1**



WEIGHT

**160 g/m<sup>2</sup>**



# STANDARD COAT

## DESCRIPTION

Fabric	FABRIC 065
Cut	UNISEX
Sizes	2XS - 2XL
Fastener	COVERED METAL SNAPS
Pockets	TWO ON THE BOTTOM ONE ON THE LEFT BREAST ONE ON THE LEFT SLEEVE
ESD sign	ON THE BREAST POCKET

## OPTIONS

Custom size	BESPOKE
Custom color	BESPOKE
Customer's logo	EMBROIDERY

## AVAILABLE COLOURS | FABRIC 065

### STANDARD

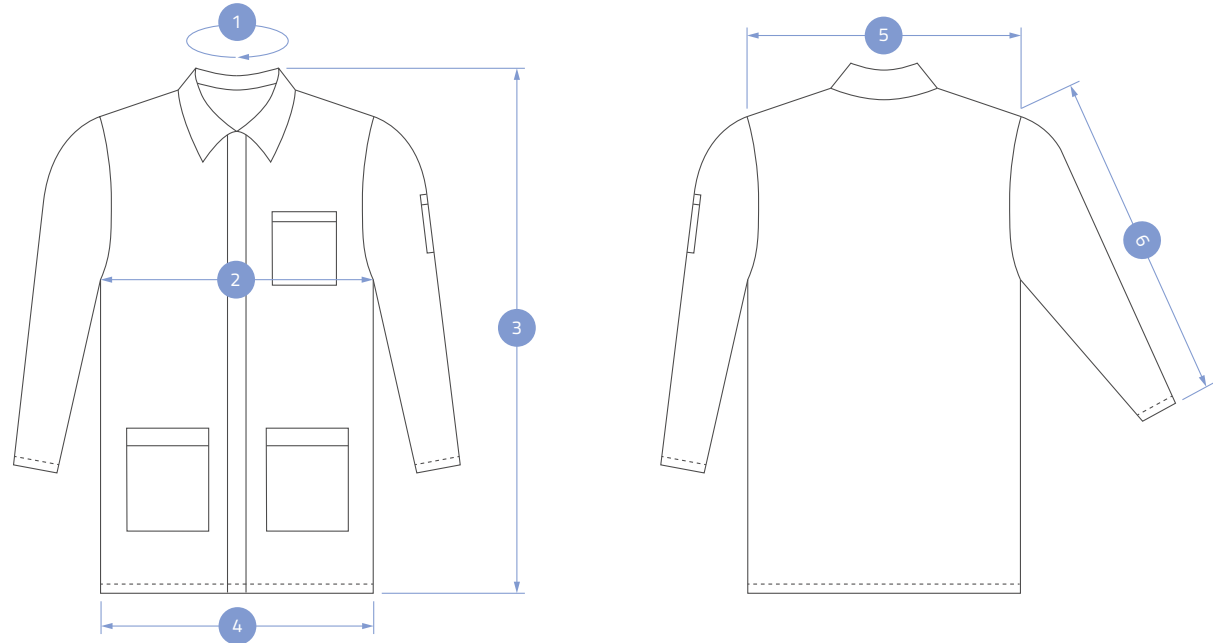


White	Blue	Navy blue	Green	Black
01	02	03	04	22

### NON-STANDARD



Yellow	Light grey	Dark grey	Red
06	14	29	60



	2XS	XS	S	M	L	XL	2XL
BODY							
1	45	46	47	47	48	48	49
2	56	58	60	62	64	66	68
3	80	80	85	90	95	100	105
4	56	58	60	62	64	66	68
5	45	46	47	48	49	50	51
SLEEVES							
6	58	60	62	64	66	68	68

Dimensions in centimeters (cm) | Dimensional tolerance +/- 1.5 cm



95%

POLYESTER

5%

CARBON FIBER

Product code:  
CE-FARTU.95



RESISTANCE IN ACCORDANCE  
WITH STANDARD

**PN-EN 61340-5-1**



WEIGHT

**100 g/m<sup>2</sup>**



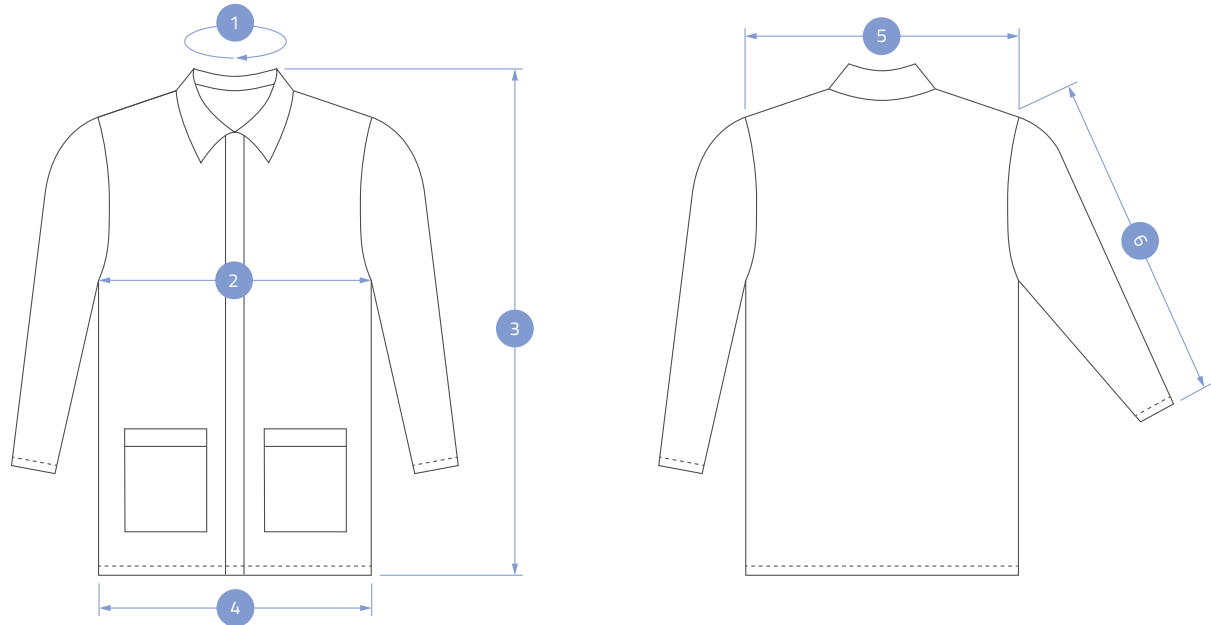
# PREMIUM COAT

## DESCRIPTION

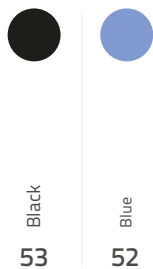
Fabric	KNIT FABRIC 95
Cut	UNISEX
Sizes	2XS - 2XL
Fastener	COVERED METAL SNAPS
Pockets	TWO ON THE BOTTOM
Sleeves	FINISHED WITH ELASTIC INTERNAL HEM
ESD sign	SIDE TAG

## OPTIONS

Custom size	BESPOKE
Custom color	BESPOKE
Customer's logo	EMBROIDERY



## AVAILABLE COLORS | KNIT FABRIC 95



	2XS	XS	S	M	L	XL	2XL
BODY							
1	45	46	47	47	48	48	49
2	56	58	60	62	64	66	68
3	80	80	85	90	95	100	105
4	56	58	60	62	64	66	68
5	45	46	47	48	49	50	51
SLEEVES							
6	58	60	62	64	66	68	68

Dimensions in centimeters (cm) | Dimensional tolerance +/- 1.5 cm

**34%**

COTTON

**64%**

POLYESTER

**2%**

CARBON FIBER

Product code:

**CE-SPODN.065.DAM**



RESISTANCE IN ACCORDANCE  
WITH STANDARD

**PN-EN 61340-5-1**



WEIGHT

**160 g/m<sup>2</sup>**



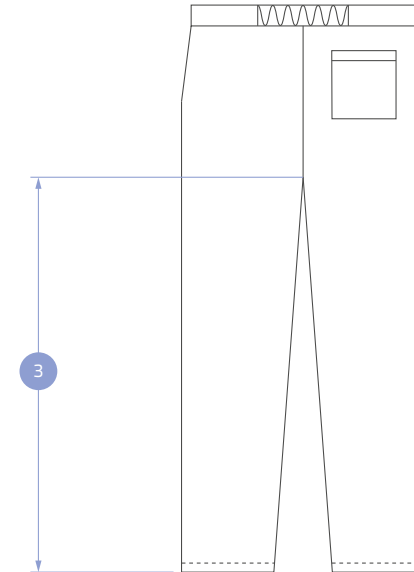
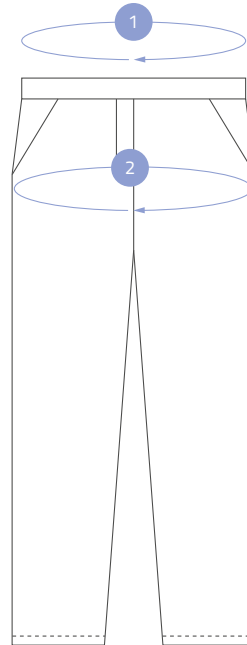
# WOMEN'S TROUSERS

## DESCRIPTION

Fabric	FABRIC 065
Cut	FEMALE
Sizes	36 - 48
Fastener	COVERED ZIPPER BUTTON AT THE WAIST
Pockets	TWO SIDE POCKETS ONE ON THE BACKSIDE
Legs	FINISHED WITH HEM
ESD sign	SIDE TAG

## OPTIONS

Custom size	BESPOKE
Custom color	BESPOKE



## AVAILABLE COLORS | FABRIC 065



Blue	Navy blue	Black	Dark grey
02	03	22	29

	36	38	40	42	44	46	48
1	68 - 72	72 - 76	76 - 80	80 - 84	84 - 88	88 - 92	92 - 96
2	45	47	49	51	53	55	58
3	72	72	73	73	74	74	75

Dimensions in centimeters (cm) | Dimensional tolerance +/- 1.5 cm

32%

COTTON

66%

POLYESTER

2%

CARBON FIBER

Product code:

**CE-SPODN.245.DAM**



RESISTANCE IN ACCORDANCE  
WITH STANDARD

**PN-EN 61340-5-1**



WEIGHT

**245 g/m<sup>2</sup>**



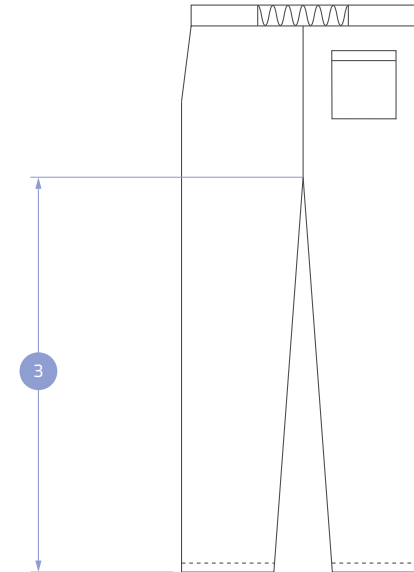
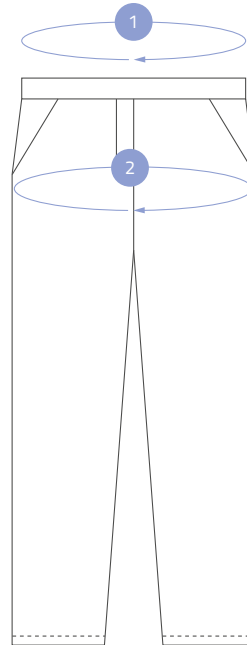
# HEAVY DUTY WOMEN'S ESD TROUSERS

## DESCRIPTION

Fabric	FABRIC 245
Cut	FEMALE
Sizes	36 - 48
Fastener	COVERED ZIPPER BUTTON AT THE WAIST
Pockets	TWO SIDE POCKETS ONE ON THE BACKSIDE
Legs	FINISHED WITH HEM
ESD sign	SIDE TAG

## OPTIONS

Custom size	BESPOKE
Custom color	BESPOKE



## AVAILABLE COLORS | FABRIC 245



Dark grey

71

	36	38	40	42	44	46	48
1	68 - 72	72 - 76	76 - 80	80 - 84	84 - 88	88 - 92	92 - 96
2	45	47	49	51	53	55	58
3	72	72	73	73	74	74	75

Dimensions in centimeters (cm) | Dimensional tolerance +/- 1.5 cm



**34%**

COTTON

**64%**

POLYESTER

**2%**

CARBON FIBER

Product code:  
**CE-SPODN.065.MES**



RESISTANCE IN ACCORDANCE  
WITH STANDARD

**PN-EN 61340-5-1**



WEIGHT

**160 g/m<sup>2</sup>**



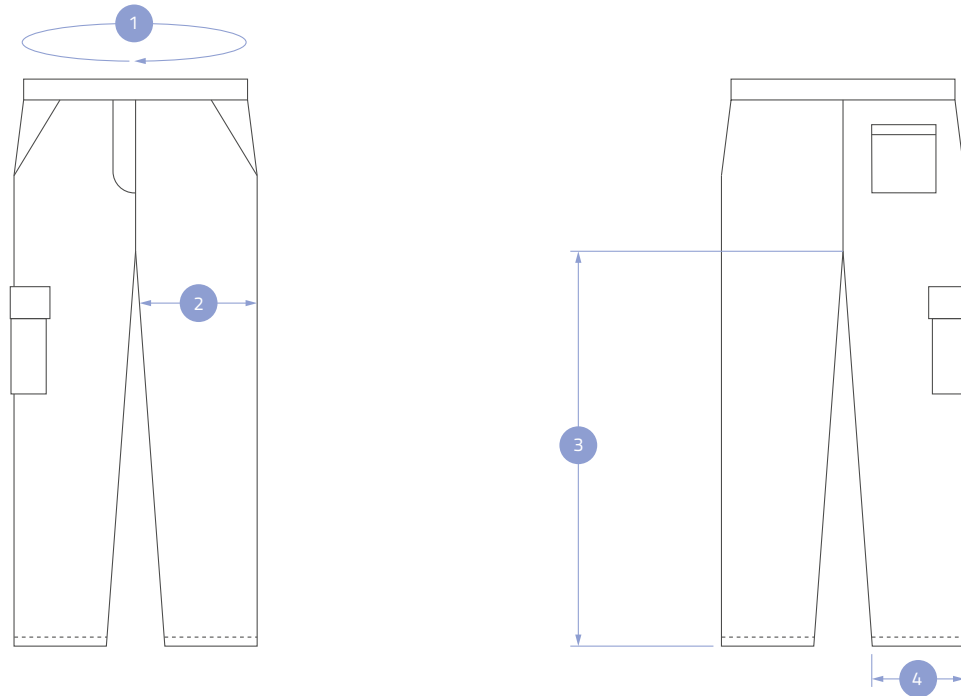
# MEN'S TROUSERS

## DESCRIPTION

Fabric	FABRIC 065
Cut	MALE
Sizes	44 - 60
Fastener	COVERED ZIPPER BUTTON AT THE WAIST
Pockets	TWO SIDE POCKETS ONE ONE THE BACKSIDE ONE ON THE RIGHT THIGH
Legs	FINISHED WITH HEM
ESD sign	SIDE TAG

## OPTIONS

Custom size	BESPOKE
Custom color	BESPOKE



## STANDARD COLORS | FABRIC 065



Blue	Navy blue	Black	Dark grey
02	03	22	29

	44	46	48	50	52	54	56	58	60
1	78	82	86	90	94	98	102	106	110
2	28	30	31	32	33	34	35	36	37
3	82	82	82	82	82	82	84	84	84
4	21	22	23	24	25	26	27	28	29

Dimensions in centimeters (cm) | Dimensional tolerance +/- 1.5 cm

**32%**

COTTON

**66%**

POLYESTER

**2%**

CARBON FIBER

Product code:

**CE-SPODN.245.MES**



RESISTANCE IN ACCORDANCE  
WITH STANDARD

**PN-EN 61340-5-1**



WEIGHT

**245 g/m<sup>2</sup>**



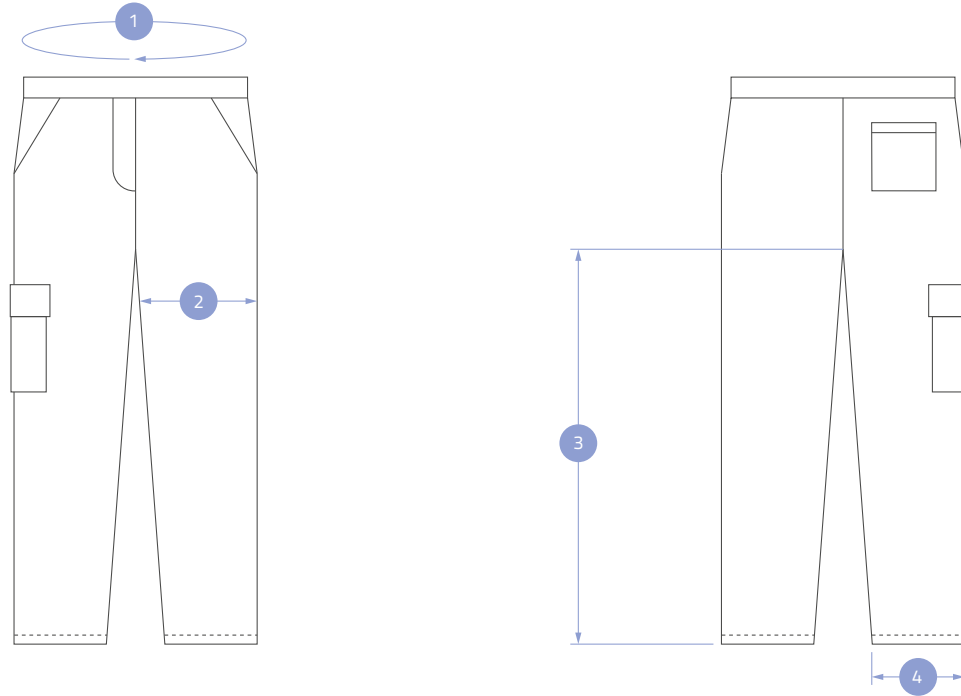
# HEAVY DUTY MEN'S ESD TROUSER

## DESCRIPTION

Fabric	FABRIC 245
Cut	MALE
Sizes	44 - 60
Fastener	COVERED ZIPPER BUTTON AT THE WAIST
Pockets	TWO SIDE POCKETS ONE ONE THE BACKSIDE ONE ON THE RIGHT THIGH
Legs	FINISHED WITH HEM
ESD sign	SIDE TAG

## OPTIONS

Custom size	BESPOKE
Custom color	BESPOKE



## AVAILABLE COLORS | FABRIC 245



Dark grey

71

	44	46	48	50	52	54	56	58	60
1	78	82	86	90	94	98	102	106	110
2	28	30	31	32	33	34	35	36	37
3	82	82	82	82	82	82	84	84	84
4	21	22	23	24	25	26	27	28	29

Dimensions in centimeters (cm) | Dimensional tolerance +/- 1.5 cm





# CLEANROOM CLOTHING

---

Cleanroom is a special clean zone in which the working environment is kept with the least level of pollution. In fact the most common cause of contamination in Cleanroom area are people whose improper behavior or inappropriate clothing interrupts the proper functioning of the clean zone, and in extreme cases destroys the final effect of the work carried out.

Based on many years of experience, we have developed Cleanroom clothing.

REECO ESD Cleanroom clothing is sewn from dust free polyester, which properties have been confirmed by competent tests.

The proposed types of clothing are intended for multiple use while maintaining appropriate washing and storage conditions.

We suggest our clients to service clothing in specialized laundries.

Our clothing is reusable and can be industrially washed. REECO brand clothing is widely used, in particular in such industries as electronic, automotive and pharmaceutical.



99%

POLYESTER

1%

CARBON FIBER



RESISTANCE IN ACCORDANCE  
WITH STANDARD

**PN-EN 61340-5-1**



WEIGHT

**110 g/m<sup>2</sup>**

Product code:  
**CE-FARTU.099**



# CLEANROOM COAT

## DESCRIPTION

Fabric	FABRIC 099
Cut	UNISEX
Sizes	2XS - 2XL
Fastener	COVERED METAL SNAPS
Pockets	INTERNAL: ONE ON THE LEFT BREAST TWO ON THE BOTTOM
Sleeves	FINISHED WITH ELASTIC HEM
ESD sign	INTERNAL TAG

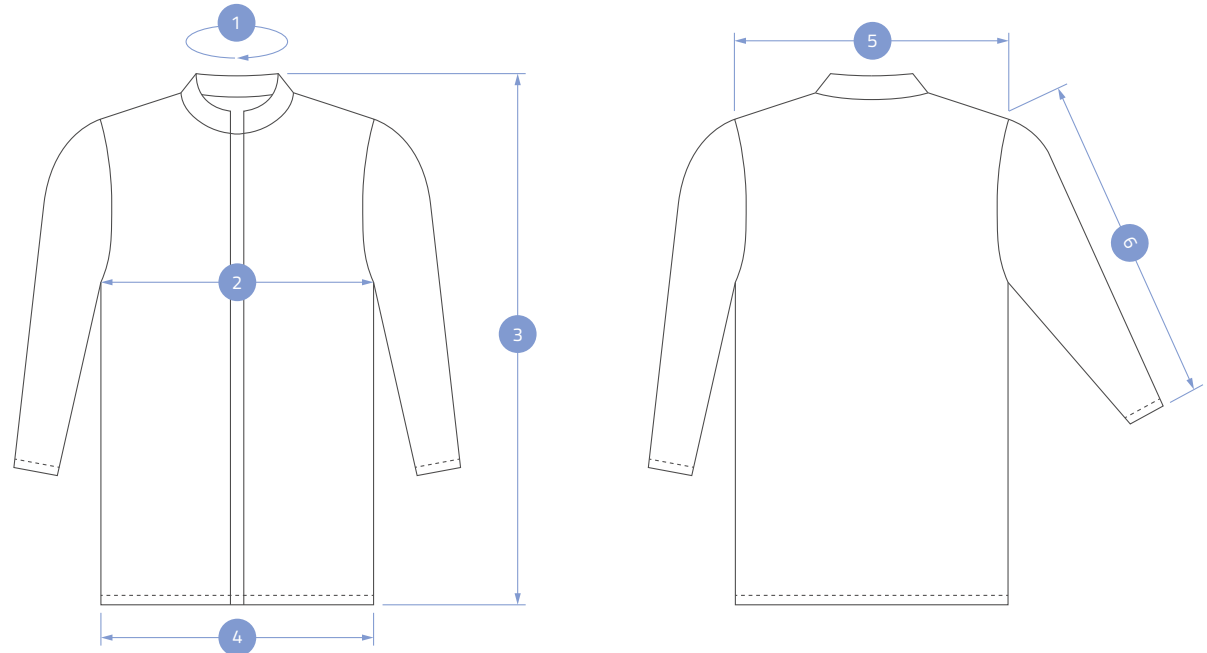
## OPTIONS

Custom size	BESPOKE
Custom color	BESPOKE
Fastener	ZIPPER
Pockets	NONE

## AVAILABLE COLORS | FABRIC 099



White	Light grey	Navy blue	Blue
08	09	10	15



	2XS	XS	S	M	L	XL	2XL
BODY							
1	44	45	46	47	48	49	50
2	55	57	60	63	65	67	69
3	90	95	100	105	110	115	120
4	55	57	60	63	65	67	69
5	45	46	47	48	49	50	51
SLEEVES							
6	58	58	60	62	64	64	66

Dimensions in centimeters (cm) | Dimensional tolerance +/- 1.5 cm

99%

POLYESTER

1%

CARBON FIBER

Product code:

[CE-FARTU.099.KAP](#)



RESISTANCE IN ACCORDANCE  
WITH STANDARD

**PN-EN 61340-5-1**



WEIGHT

**110 g/m<sup>2</sup>**



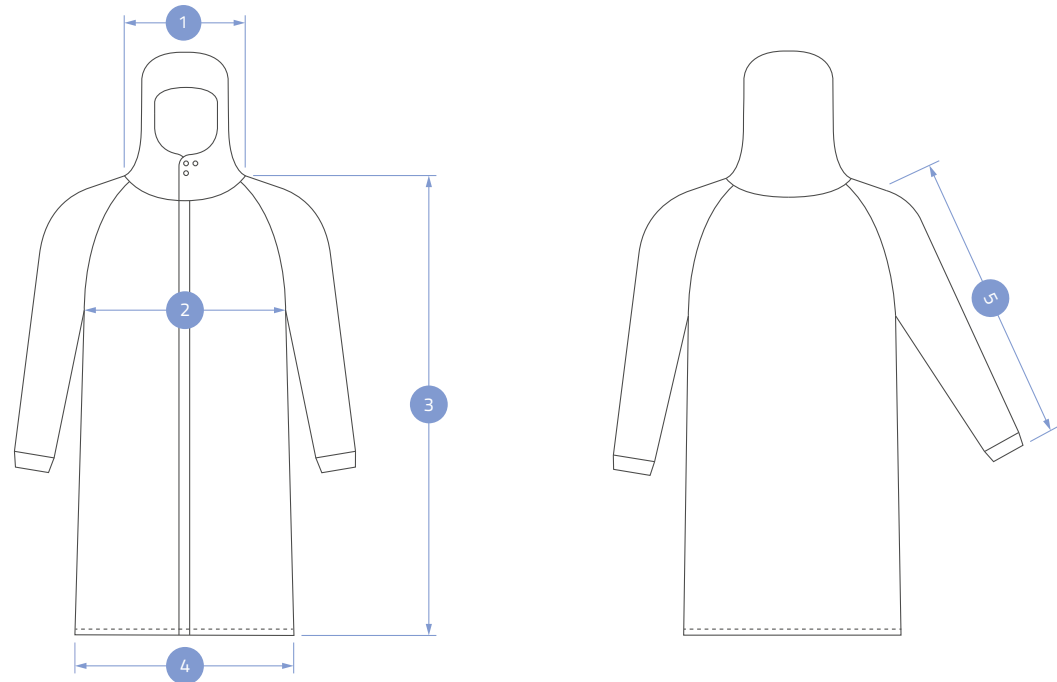
# CLEANROOM HOODED COAT

## DESCRIPTION

Fabric	FABRIC 099
Cut	UNISEX
Sizes	2XS - 2XL
Fastener	COVERED ZIPPER
Sleeves	RIB CUFF
ESD sign	INTERNAL TAG

## OPTIONS

Custom size	BESPOKE
Custom color	BESPOKE



## AVAILABLE COLORS | FABRIC 099



White	Light grey	Navy blue	Blue	Dark green	Neon green
08	09	10	15	16	18

	2XS	XS	S	M	L	XL	2XL
BODY							
1	18	18	18	18	18	18	18
2	54	58	62	66	70	74	78
3	102	103	104	105	106	107	108
4	56	60	64	68	70	74	78
SLEEVES							
5	79	80	81	82	83	84	85

Dimensions in centimeters (cm) | Dimensional tolerance +/- 1.5 cm

99%

POLYESTER

1%

CARBON FIBER



RESISTANCE IN ACCORDANCE  
WITH STANDARD

**PN-EN 61340-5-1**



WEIGHT

**110 g/m<sup>2</sup>**

Product code:  
**CE-KOMBI.099**



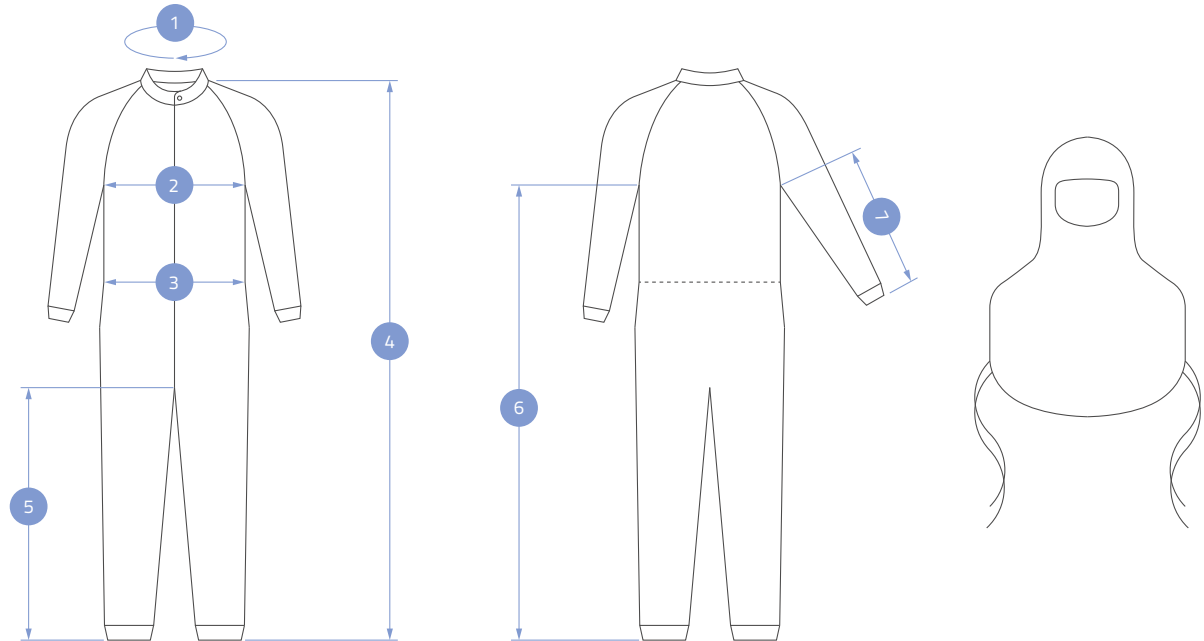
# CLEAN ROOM COVERALL

## DESCRIPTION

Fabric	FABRIC 099
Cut	UNISEX
Sizes	2XS - 2XL
Fastener	COVERED ZIPPER
Sleeves	FINISHED WITH ELASTIC HEM
Legs	FINISHED WITH ELASTIC HEM
Waist	ADJUSTABLE WELT
Hood	SEPARATED FROM THE COVERALL ADJUSTABLE TIED UNDER THE ARMS
ESD sign	INSIDE

## OPTIONS

Custom size	BESPOKE
Custom color	BESPOKE
Hood	INTEGRATED WITH COVERALL



## AVAILABLE COLORS | FABRIC 099



	2XS	XS	S	M	L	XL	2XL
BODY							
1	47	47	48	51	52	53	54
2	51	55	59	63	67	71	75
3	42	46	50	54	58	62	66
4	164	165	166	169	171	173	175
5	78	78	79	81	81	82	82
6	132	133	134	136	137	138	138
SLEEVES							
7	60	61	62	63	64	65	65

Dimensions in centimeters (cm) | Dimensional tolerance +/- 1.5 cm









# REECO CLOTHING WASHING INSTRUCTIONS

	FABRIC 065	FABRIC 099	PIQUE KNIT FABRIC	KNIT FABRIC 050	KNIT FABRIC 260	KNIT FABRIC 95	FABRIC SFTL	FABRIC 245
WASHING TEMPERATURE	 Wash at 60°C	 Wash at 60°C	 Wash at 40°C	 Wash at 40°C	 Wash at 40°C	 Wash at 40°C	 Wash at 40°C	 Wash at 60°C
BLEACHING	 Do not bleach	 Do not bleach	 Do not bleach	 Do not bleach	 Do not bleach	 Do not bleach	 Do not bleach	 Do not bleach
DRYING	 Tumble dry low temperature	 Tumble dry low temperature	 Tumble dry low temperature	 Tumble dry low temperature	 Tumble dry low temperature	 Tumble dry low temperature	 Do not tumble dry	 Tumble dry low temperature
IRONING	 Max sole-plate temp. 150°C	 Max sole-plate temp. 150°C	 Max sole-plate temp. 120°C	 Max sole-plate temp. 120°C	 Max sole-plate temp. 120°C	 Max sole-plate temp. 120°C	 Max sole-plate temp. 110°C	 Max sole-plate temp. 150°C
DRY CLEANING	 Do not dry clean	 Do not dry clean	 Do not dry clean	 Do not dry clean	 Do not dry clean	 Do not dry clean	 Do not dry clean	 Do not dry clean



The effectiveness of antistatic protective clothing may be affected by: wear, damage, laundry and possible contamination. We recommend washing clothes in controlled conditions.

# COOPERATION

Since 2009 we've been offering REECO ESD Antistatic Clothing based on three sales channels:



## END USERS

We deliver our products to small and medium -sized companies as well as to large corporations and individuals persons.

REECO clothing is used in many industries, in particular: electronic, automotive, food, pharmaceutical and hazardous areas EX.



## CLOTHING RENTAL SERVICES

We have more than 10 years of experience in cooperation with companies providing laundry and clothing service both in Poland and abroad.

We provide assistance in establishing contact with the client as well as product training.



## DISTRIBUTION

We work with distributors of workwear and personal protection equipment, both in Poland and abroad.

REECO clothing is sold by our partners among others in Germany, France, Romania, USA as well as in Italy and the United Kingdom.

We guarantee professional help, product trainings and joint visits with clients.

# Reeco

...IS NOT JUST CLOTHING

**Reeco**

*ESD Workstations*

**Reeco**

*Robots*

**Reeco**

*Equipment*

**Reeco**

*Cleanroom*

FIND OUT MORE



# MODULAR ANTISTATIC FURNITURE

## REECO ANTISTATIC FURNITURE

Is a line of modular industrial furniture manufactured on the basis of steel structures finished with antistatic coatings. Thanks to that they can be used in EPA created for absolute elimination of electrostatic discharges.

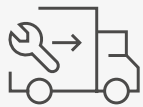
The modular structure of REECO furniture allows for flexible adaptation to the requirements of the work environment. This allows for the creation of ergonomic spaces that can be extended and modified as the company grows.



CERTIFIED  
PRODUCT QUALITY



5-YEAR GUARANTEE ON  
THE ENTIRE RANGE OF PRODUCTS



CERTIFIED  
PRODUCT QUALITY



DELIVERY AND  
ASSEMBLY ON SITE

+48 601 319 635 | [esdworkstations@reeco.info](mailto:esdworkstations@reeco.info) | [furniture.reeco.info](http://furniture.reeco.info)

**Reeco**  
ESD Workstations





# ROBOTS

---

REECO ROBOTS ARE FULLY AUTOMATIC, AUTONOMOUS AND READY-TO-RUN UNITS THAT CAN BE INTEGRATED INTO EXISTING OR NEW PRODUCTION LINES

They do not require complex and sophisticated design, planning and integration processes and can be operated without specialist knowledge or experience.

Production quality control allows us to offer a product made with the highest precision and care.

## TECHNICAL SUPPORT

We provide training for engineers, technicians and maintenance services in the field of robots operation and programming.

## SERVICES

We provide comprehensive warranty and post-warranty service. From maintenance and repair to the supply of suitable spare parts..

## TRAINING

We provide training for engineers, technicians and maintenance services in the field of robots operation and programming..

+48 885 592 555 | [robots@reeco.info](mailto:robots@reeco.info) | [robots.reeco.info](http://robots.reeco.info)



# CLEANROOM

## REECO ANTISTATIC FURNITURE

For many years REECO has been providing specialized solutions for many manufacturing industries. We approach each customer individually and guarantee that our offer is tailored to individual needs.

We offer: pass boxes, specialized clothing, and mobile clean zones.

Clothing designed for Cleanroom areas is manufactured from materials that do not emit dust or particles into the air. This is essential when working with advanced technologies in the pharmaceutical, medical or space industries, among others.

We prepare customized pass boxes for individual customers, providing advice and installation. Pass boxes enable fast and safe transfer of samples, packaging materials and tools between rooms, reducing time and minimizing the possibility of cross-contamination.

Mobile cleanrooms are modular, mobile structures that allow you to create a cleanroom on the surface of several square meters. The use of mobile clean room allows you to save time and money.



INDIVIDUAL  
PROJECTS



FREE CONSULTING  
AND AUDITS



WORKSPACE  
DESIGN

+48 885 222 151 | [esdclothing@reeco.info](mailto:esdclothing@reeco.info) | [cleanroom.reeco.info](http://cleanroom.reeco.info)





# ELECTRONICS MANUFACTURING AND SERVICE EQUIPMENT

REECO EQUIPMENT IS A PRODUCT RANGE  
BY THE REECO BRAND, DESIGNED TO SUPPORT ELECTRONICS  
PRODUCTION AND SERVICE PROCESSES

Reeco Equipment is a product range by the Reeco brand, designed to support electronics production and service processes. It includes a variety of tools and devices tailored to meet the specific needs of professionals in the electronics industry.

The Reeco Equipment assortment features products such as soldering stations, PCB heaters, feeders, and dispensers, which are essential for daily operations related to the assembly and repair of electronic components. The range also includes equipment like fume extractors, which help maintain a clean and safe working environment, and ultrasonic cleaners, enabling effective cleaning of tools and parts.

The Reeco Equipment product line also offers antistatic protections, stands, lamps, magnifiers, and other accessories that support precise and efficient work with delicate electronic components. Each product in this line is characterized by durability and reliability, making it a solid support in various production and service applications.

+48 693 863 196

✉ [equipment@reeco.info](mailto:equipment@reeco.info)

🌐 [equipment@reeco.info](http://equipment@reeco.info)



## HEADQUARTERS - POLAND

Al. Kazimierza Wielkiego 6E  
87-800 Włocławek, POLAND

T: + 48 54 427 04 00  
E: office@reeco.info

## PRODUCT MANAGER

T: + 48 726 111 150  
E: esdclothing@reeco.info

## BRANCHES

### SERBIA

Institute Mihajlo Pupin  
Volgina 15, 11060 Belgrade, SERBIA

T: + 381 66 03 01 03  
E: serbia@reeco.info

### CROATIA | SLOVENIA

Ulica grada Vukovara 271  
10000 Zagreb, CROATIA

T: + 385 99 44 89 666  
E: croatia@reeco.info

### BULGARIA

Botevgradsko Logistics Park  
blvd. Botevgradsko Shose 228  
1839 Sofia, BULGARIA

T: + 359 877 066 363  
E: office@renex.bg

### NORTH MACEDONIA

Stojka Cekova 58  
Skopje, NORTH MACEDONIA

T: + 389 70 261 741  
T: + 389 2 255 0519  
E: office@renex.mk

### ROMANIA

RENEX SRL  
Municipiul Timișoara, Strada  
Gheorghe Lazăr, Nr. 24A, parter,  
spațiu NR.6, Județ Timiș

SUBSIDIARY  
Strada Văliug, nr. 32, Sector 1  
13986 București, ROMANIA

T: + 40 799 774 330  
E: romania@reeco.info

